





Little Lime Tree Weston Road, Bletchingdon, OX5 3DH

Offers Over £600,000

Little Lime Tree captures the heart with its mix of eccentricity, utter charm and surprising practicality. Come and be seduced!

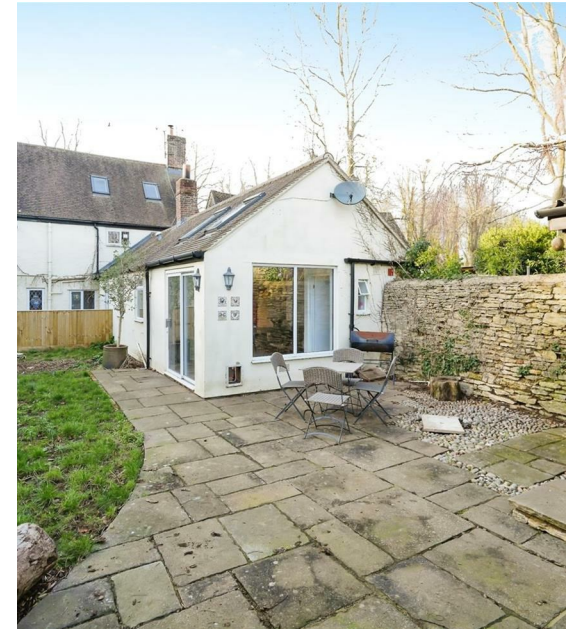
One of our absolute favourites!! An ancient and characterful village house of c.2,200 sq ft overlooking the green, combining the charm of flagstones and beams with large rooms and good light. 3 generous bedrooms, 24 ft kitchen, & 3 receptions, bathroom & en-suite. Double garage & driveway parking.

Bletchingdon is a well regarded North Oxfordshire village, set on a plateau overlooking Oxford and Kidlington. Its roots date back to Norman times, as evidenced by St Giles parish church. The village strikes that rare balance between local amenities, a good community, lovely countryside and also easy commuting. A recently built school and village hall are both well used by the community. The hall hosts a café plus a range of clubs and classes, and there's also a village grocery store. There is an active sports and social club, with an adjacent childrens' play area. Access is excellent with Oxford and Bicester within easy driving distance. The village is also less than 10 minutes drive from the Oxford Parkway rail station, offering trains to London Marylebone. In addition, Islip, Bicester and Oxford stations are also close by. And for those working from home, the broadband provided by Gigaclear in this area is one of the fastest services in the UK.

Little Lime Tree is a grade 2 listed historic village house of c.2,200 sq ft , set in a lovely spot overlooking the village green. Believed to date from the early eighteenth century, it exudes the charm of flagstones and beams with character features that are sure to raise a smile, from the leaded windows to the stone fireplace. What really sets it apart is the space! Every room is large, light and exceptionally well proportioned, unusual for a village house of this age. For those of us who invariably let their heart rule their head in property purchases, this house can also lay claim to being a sensible and shrewd choice!

A pair of pretty, leaded-glass doors open onto a wide hall. large enough that it has often doubled as a study/further living room. The original floor of Cotswold flagstones and beams overhead immediately set the tone for a house that is steeped in character and history. This leads onto the rear hallway, featuring a built-in cupboard and with an alcove at the end ideal for a dresser or chest. To the left, the drawing room opens out as a bright, pretty room with a stone fireplace so typical of a property of this age, fitted with an attractive woodburning stove. This room also boasts a leaded bay window that looks out over the peaceful village green.

- Wonderful character
- Surprising light & space
- Three large double bedrooms
- Three receptions
- 24 ft vaulted kitchen/ diner
- En-suite, bath & cloak rooms
- Private and secure garden
- Double garage, driveway
- The most delightful outlook



Little Lime Tree Weston Road, Bletchingdon, OX5 3DH

Offers Over £600,000

Off to the rear of the hallway, a third reception is ideal as a family/play room, a particularly pleasant feature of which is double doors opening onto the garden. It also benefits from a sizeable walk-in cupboard. To the rear, perhaps the most impressive feature of this house is the kitchen/dining room. At 24 feet long, it is an unusually good size yet it feels even larger due to the vaulted ceiling at one end and the large glazed areas which flood it with light. Underfoot a slate floor suits the room perfectly, and contrasts very well with the extensive range of cream painted units with their wooden work top and double butler sink. Our client spends most of their time here as it is a practical room and also provides a peaceful view over the garden.

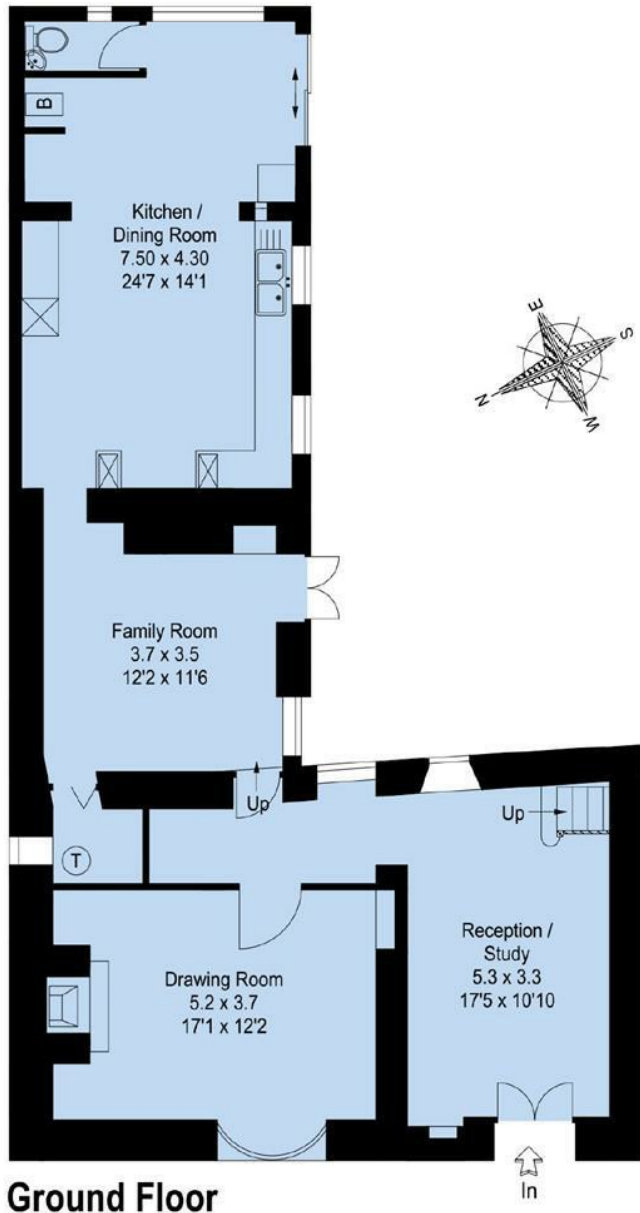
From the front hall a stairway leads up to the first floor. Again, this is a light space by virtue of a well-placed window over the landing. The first of the two bedrooms on this floor is all you would hope it to be. A large and elegant space, it is also equipped with an ample built-in wardrobe/cupboard, making it very practical. The leaded window to the front is wide and attractive, and its view over the green is one of the best in the village. The second, adjacent bedroom is a similar size with a built-in wardrobe/cupboard and also looks across the green. Serving both, the family bathroom is cleverly chosen to seamlessly integrate with the original character - a modern white suite including a thermostatic shower over the bath, with an oak top hosting an inset sink to the bespoke vanity unit.

The main suite occupies the top floor, with character provided by exposed A-frame roof trusses, and a dormer window supplying ample light. The landing is quite wide and hence there is plenty of room for storage on the left, and there's even a large walk-in wardrobe! Beyond, the en-suite is such a good size it contains a bath. At the end of the landing, the bedroom is a beautiful space with the characteristic A-frames and timber roof purlins all the way down the room. A dormer window to the front and two veluxes to the rear make this a fabulously bright room. It is also large, amply providing space for a double bed with side cabinets, in addition to which there is masses of space to the other end to build in wardrobes or place a blanket chest. By any measure, it's a lovely space.

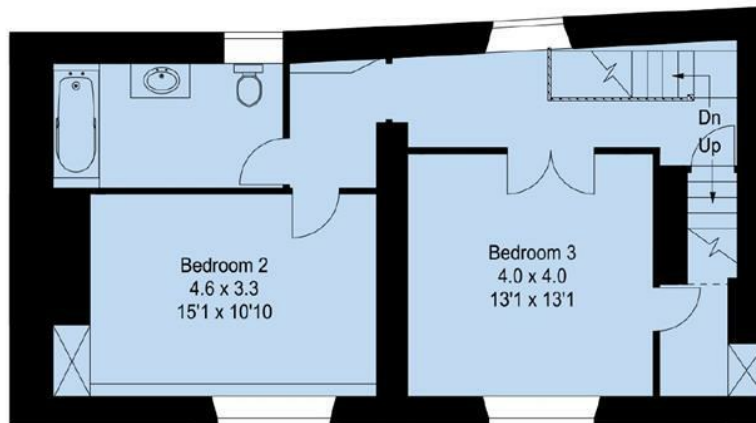
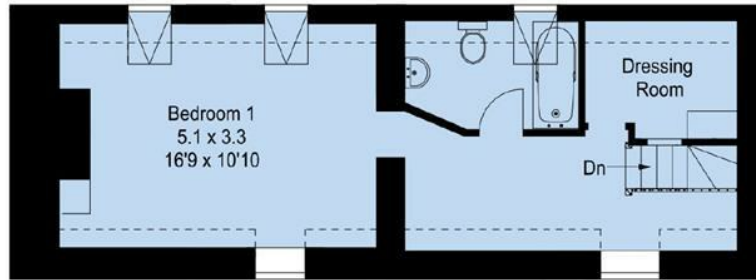
Outside, the garden is peaceful and secluded, with a Cotswold stone wall and hedges around perimeter. Simply landscaped for ease of maintenance with a range of mature trees featuring a useful stone outbuilding. Beyond this is the added bonus of the driveway, leading to off-road parking for three vehicles, and a double garage. In all, this is a really significant find for anyone wanting a spacious village house that combines history and charm with ease of use and modern fittings.







Approximate Gross Internal Area :- 199 sq mt / 2142sq ft



= Reduced headroom below 1.5 mt / 5'0

Illustration For Identification Purposes Only. Not To Scale

Material Information QR Code:



Energy Efficiency Rating

	Current	Potential
Very energy efficient - lower running costs		
(92 plus) A		
(81-91) B		
(69-80) C		73
(55-68) D		
(39-54) E	39	
(21-38) F		
(1-20) G		
Not energy efficient - higher running costs		
England & Wales	EU Directive 2002/91/EC	

to discuss this property or to arrange a viewing please call, or drop us a line interested@cridlands.co.uk

01869 343600

<https://www.cridlands.co.uk>

Important Notice

These particulars are offered on the understanding that all negotiations are conducted through this company. Neither these particulars, nor oral representations, form part of any offer or contract and their accuracy cannot be guaranteed. Any floor plan provided is for representation purposes only, as defined by the RICS Code of Measuring Practice and whilst every attempt has been made to ensure their accuracy the measurements of windows, doors and rooms are approximate and should be used as such by prospective purchasers. Any services, systems and appliances mentioned have not been tested by us and we cannot verify that they are in working order.